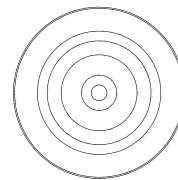
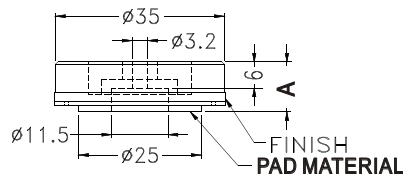
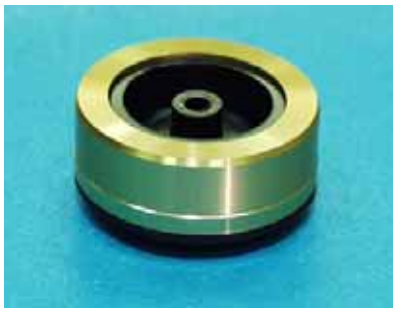


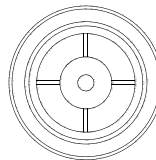
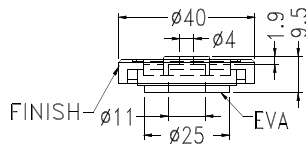
# PLASTIC & RUBBER FOOT

Hankook Fastener

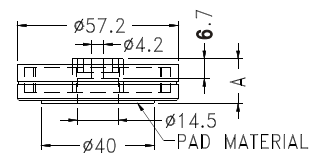
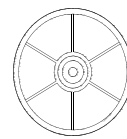
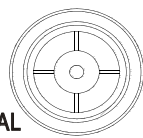
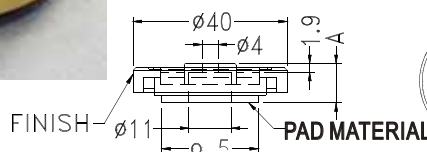


- ◆ HOUSING MATERIAL:ABS
- ◆ METAL MATERIAL:AL
- ◆ COLOR:BLACK
- ◆ UNIT:mm

PART NO	A	PAD MATERIAL	FINISH
RA -35	11.5	EVA	GOLD PLATED
RA-35(S)			SILVER PLATED
RA-35(S)RU	10.5	RUBBER	

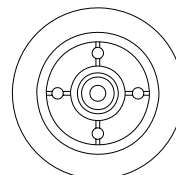
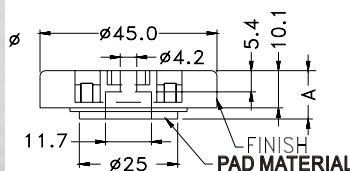


PART NO	FINISH
RA-40A	GOLD PLATED
RA-40A(S)	SILVER PLATED

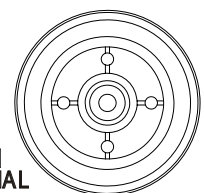
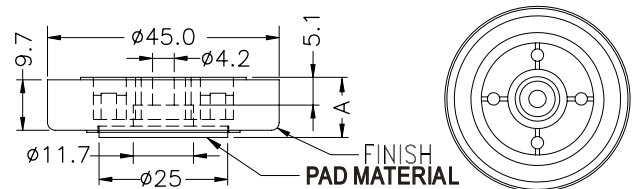
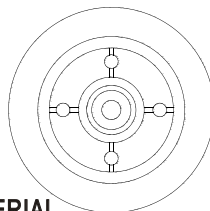
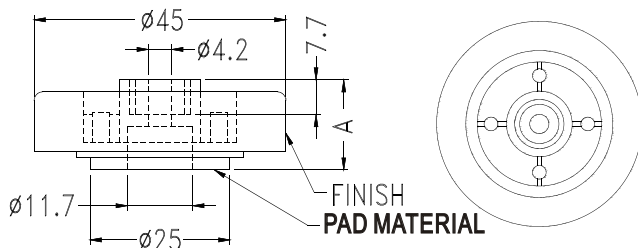


PART NO	A	PAD MATERIAL	FINISH
RA -40	12.0	EVA	GOLD PLATED
RA-40(RU)	11.0	RUBBER	
RA-40(S)	12.0	EVA	SILVER PLATED
RA-40S(RU)	11.0	RUBBER	
RA-40(K)	12.0	EVA	CHAMPAGNE COLOR

PART NO	A	PAD MATERIAL	FINISH
RA-57	17.0	EVA	GOLD PLATED
RA-57(RU)	17.1	RUBBER	
RA-57(S)	17.0	EVA	SILVER PLATED
RA-57S(RU)	17.1	RUBBER	



PART NO	A	PAD MATERIAL	FINISH
RA-45S-1	12.5	EVA	SILVER PLATED
RA-45-1(RU)	11.5	RUBBER	GOLD PLATED
RA45S-1(RU)			SILVER PLATED

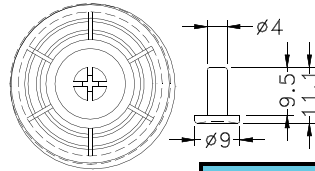
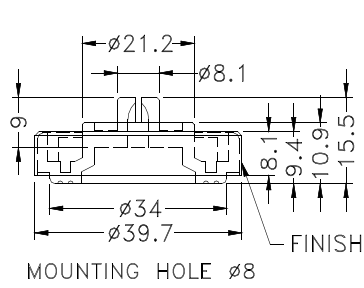
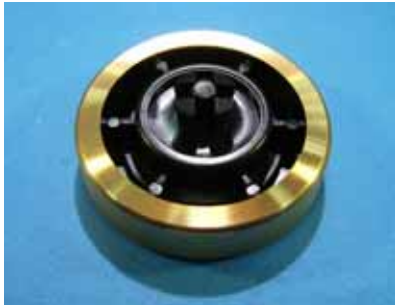


PART NO	A	PAD MATERIAL	FINISH
RA-45	15.0	EVA	GOLD PLATED
RA-45(S)			
★RA-45(RUS)	14.0	RUBBER	SILVER PLATED
RA-45S(RU)	14.1	RUBBER	
RA-45(S)I		SILICON RUBBER	

PART NO	A	PAD MATERIAL	FINISH
RA-45S-3	12.5	EVA	SILVER PLATED

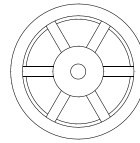
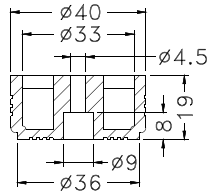
# PLASTIC & RUBBER FOOT

Hankook Fastener



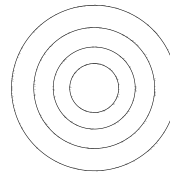
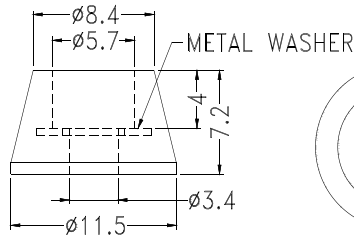
- ◆ FOOT MATERIAL:PE
- ◆ PIN MATERIAL:PP
- ◆ METAL MATERIAL:AL
- ◆ COLOR:BLACK
- ◆ UNIT:mm

PART NO	FINISH
RAFF-40	GOLD PLATED
RAFF-40(S)	SILVER PLATED
RAFF-40(B)	BLACK PLATED



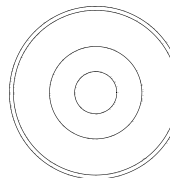
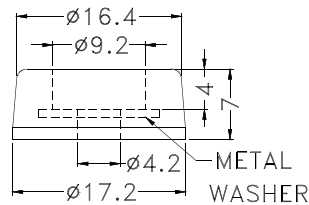
- ◆ MATERIAL:TPU
- ◆ COLOR:BLACK
- ◆ UNIT:mm

PART NO	PACKAGE
FFP-40	50

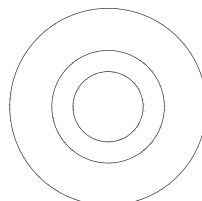
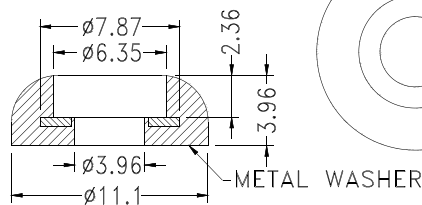


- ◆ MATERIAL:RUBBER
- ◆ COLOR:BLACK
- ◆ UNIT:mm

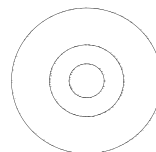
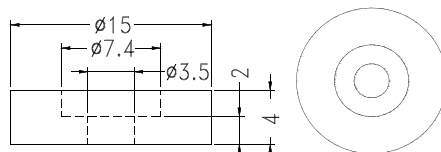
PART NO
NF-002ST



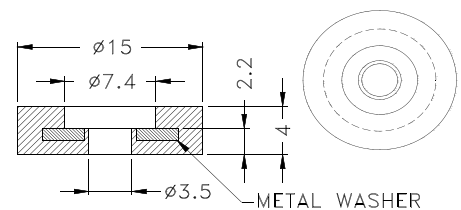
PART NO
NF-005ST



PART NO
NF-011ST



PART NO	PACKAGE
NF-012	1000

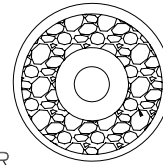
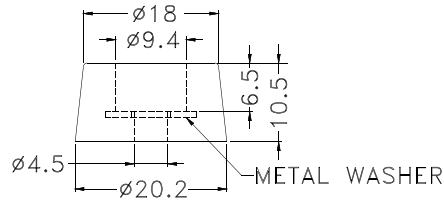


PART NO	PACKAGE
NF-012ST	1000

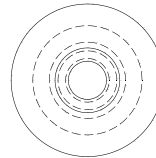
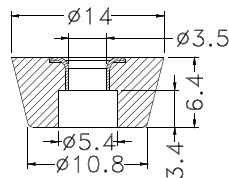
# PLASTIC & RUBBER FOOT

Hankook Fastener

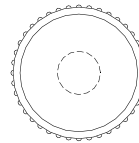
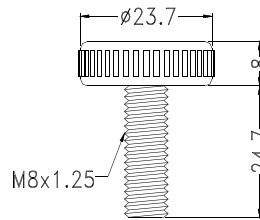
- ◆ MATERIAL: RUBBER
- ◆ COLOR: BLACK
- ◆ UNIT: mm



PART NO	PACKAGE
NF-015ST	1000

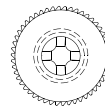
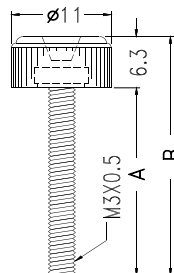


PART NO	PACKAGE
NF-016ST	1000



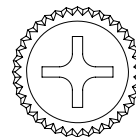
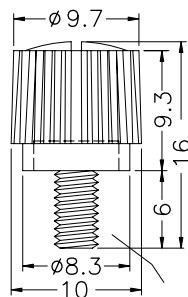
- ◆ HEAD MATERIAL: P.P
- ◆ BODY FINISH: NICKEL PLATED
- ◆ UNIT: mm

PART NO	PACKAGE
GPE8-32	1000



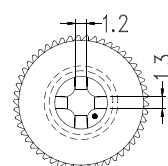
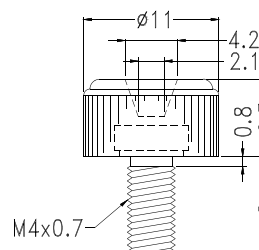
- ◆ HEAD MATERIAL: ABS (UL) 94V-0
- ◆ BODY FINISH: NICKEL PLATED
- ◆ UNIT: mm

PART NO	A	B	PACKAGE
GPE3-15	15	21.3	1000
GPE3-23	23	29.3	



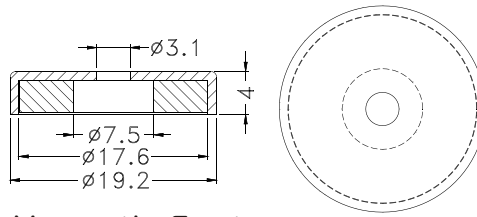
- ◆ HEAD MATERIAL: P.P
- ◆ COLOR: BLACK/COMPUTER
- ◆ UNIT: mm

PART NO	PACKAGE
GPE632-6	1000



- ◆ HEAD MATERIAL: ABS(UL)
- ◆ COLOR: NATURAL/BLACK
- ◆ UNIT: mm

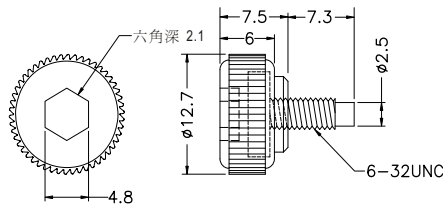
PART NO	PACKAGE
GPE4-8	500



Magnetic Foot

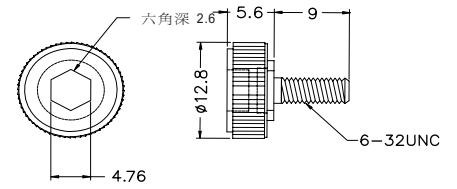
- ◆ METAL COVER MATERIAL: STEEL
- ◆ METAL COVER COLOR: 淺白色
- ◆ MAGNET MATERIAL: 強力氧化磁鐵
- ◆ MAGNET COLOR: BLACK
- ◆ UNIT: mm

PART NO	PACKAGE
MGFF-1	500



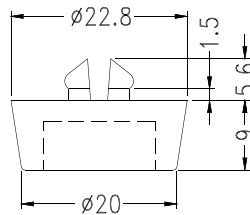
PART NO	PACKAGE
GPE632-5	1000

Foot Leveler



PART NO	PACKAGE
GPE632-9	1000

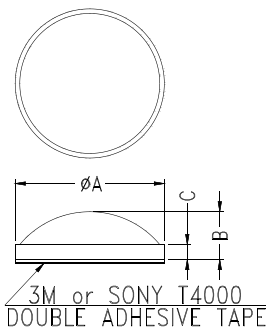
- ◆ HEAD MATERIAL: ABS (UL)94HB
- ◆ BODY MATERIAL: BRASS
- ◆ COLOR: NATURAL
- ◆ UNIT: mm



MOUNTING HOLE  $\phi 8$

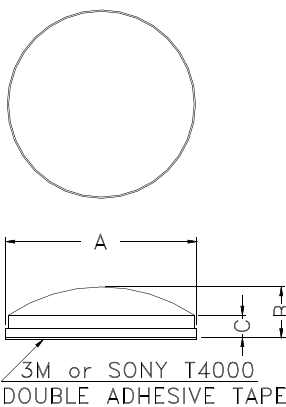
- ◆ MATERIAL: PE
- ◆ COLOR: BLACK
- ◆ UNIT: mm

PART NO	PACKAGE
GL-4	500



- ◆ MATERIAL: RUBBER
- ◆ COLOR: BLACK/GRAY/ COMPUTER/TRANSPARENT
- ◆ UNIT: mm
- ◆ OTHER MATERIALS AVAILABLE: EPDM, SILICON, ....

PART NO	A	B	C
RF-002	10.0	2.8	
RF8-2A	8.0	2.0	1.0
RF8-2.4A		2.4	
RF8-2.6A		2.6	1.1

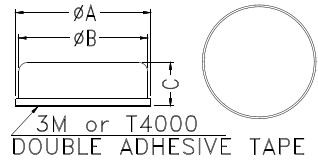


- ◆ MATERIAL: RUBBER
- ◆ COLOR: COMPUTER

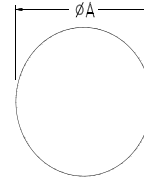
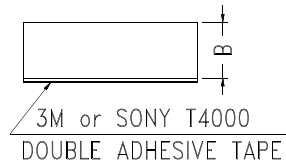
PART NO	A	B	C
RF-004	9.9	3.8	2.8
RF14-5A	14.0	5.0	3.9
RF27-7AC-1	27.8	7.4	3.3



PART NO	A	B	C
RF9-3.5	9.0	8.2	3.5
RF8.2-5	8.2	7.6	5.0
RF8-3.5	8.0	8.2	3.5
RF15.5-5A	15.4	14.8	5.1
RF22.8-5	22.8	22.4	5.0
RF22-8.8	22.0	21.0	8.8
RF22-5			5.0



- ◆ MATERIAL: RUBBER
- ◆ COLOR: BLACK
- ◆ UNIT: mm



PART NO	A	B	
RF3.8-2	3.8	2.0	
RF0415	4.0	1.5	
RF4-0.5		0.5	
RF4-0.6	4.5	0.6	
RF4.5-1.5		1.5	
RF4.5-2.7	2.7		
RF4.8-1	4.8	1.0	
RF5-1.5	5.0	1.5	
RF5-2		2.0	
RF5-2.5		2.5	
RF5-3.5	3.5		
RF5.3-0.7	5.3	0.7	
RF5.5-1.6	5.5	1.6	
RF5.6-2	5.6	2.0	
RF6-0.5	6.0	0.5	
RF6-0.8		0.8	
RF6-0.9		0.9	
RF6-1		1.0	
RF6-1.3		1.3	
RF6-1.5		1.5	
RF6-2		2.0	
RF6-2.5		2.5	
RF6-3		3.0	
RF6-3.5		3.5	
RF6.4-2.6	6.4	2.6	
RF6.5-1	6.5	1.0	
RF6.5-2.5		2.5	
RF6.6-1.5	6.6	1.5	
RF6.6-1.8		1.8	
RF6.6-2		2.0	
RF7-0.5	7.0	0.5	
RF7-0.9		0.9	
RF7-1		1.0	
RF7-1.5		1.5	
RF7-2		2.0	
RF7-2.5		2.5	
RF7-2.7		2.7	
RF7.2-1.5		7.2	1.5
RF7.5-2		7.5	2.0
RF-001		8.0	1.8
RF8-0.5	0.5		

PART NO	A	B	
RF8-1	8.0	1.0	
RF8-1.4		1.4	
RF8-1.5		1.5	
RF8-2		2.0	
RF8-2.5		2.5	
RF8-3		3.0	
RF8.5-1.5	8.5	1.5	
RF8.5-2		2.0	
RF9-1	9.0	1.0	
RF9-1.2		1.2	
RF9-1.5		1.5	
RF9-2		2.0	
RF9-2.5		2.5	
RF9-3	3.0		
RF9.5-0.8	9.5	0.8	
RF9.5-1.5		1.5	
RF9.5-1.8		1.8	
RF9.5-2		2.0	
RF9.5-3		3.0	
RF10-0.8		10.0	0.8
RF10-1	1.0		
RF10-1.3	1.3		
RF-1016	1.6		
RF-1018	1.8		
RF10-2	2.0		
RF10-3	3.0		
RF10.5-1	10.5		1.0
RF10.5-15			1.5
RF10.5-2			2.0
RF-11632	11.6	3.2	
RF12-1.5	12.0	1.5	
RF-1210		1.0	
RF12-2.7		2.7	
RF-1220		2.0	
RF12-3		3.0	
RF12-3.6		3.6	
RF-1232		3.2	
RF-12520		12.5	2.0
RF-12.5-1			1.0
RF12732		12.7	3.2
RF13-1	13.0	1.0	

PART NO	A	B
RF13-3	13.0	3.0
RF14-4	14.0	4.0
RF14530	14.5	3.0
RF14.5-4		4.0
RF1463	14.6	3.0
RF-1510	15.0	1.0
RF-1520		2.0
RF-1530		3.0
RF16.5-3	16.5	3.0
RF18-1.3	18.0	1.3
RF18-1.5		1.5
RF18-2.5		2.5
RF19-1	19.0	1.0
RF19-2		2.0
RF19-3		3.0
RF19-4		4.0
RF-19823		19.8
RF20-1	20.0	1.0
RF20-1.5		1.5
RF20-1.8		1.8
RF-2023		2.3
RF-2025		2.5
RF20-3		3.0
RF-2030		3.0
RF22-2		2.0
RF22-2.5		2.5
RF22-5		5.0
RF-2220	2.0	
RF24.6-3	24.6	3.0
RF25-2.3	25.0	2.3
RF27-3	27.0	3.0
RF28-3.2	28.0	3.2
RF30-2	30.0	2.0
RF40-1	40.0	1.0
RF58-1.5	58.0	1.5
RF58-2		2.0